



QUALIMS LABStock

Module for managing laboratory stocks, safety data and associated expiry dates.

THE "PLUS"

- **Identification of items** (reagents, SCR, consumables, prepared solutions)
- **Management of Safety Data Sheets**
- **Labelling of packaging** in accordance with the requirements of Good Manufacturing Practice
- Possible **integration of barcodes** to manage packaging by handheld scanner
- **Management of expiry dates** before and after opening of containers
- **Monitoring of multi-laboratory stocks** (automatic alert e-mail)
- **Management of the preparation modes** of the prepared solutions
- **Management of storage** conditions and incompatibilities
- **Management of requirement** and purchases
- **Automatic monitoring** of staff exposure to hazardous products
- **Analytical management** of costs, quantities purchased and consumed



WITHOUT

QUALIMS LABStock, your stock management would look like this...



WITH

QUALIMS LABStock, the traceability of your products is **perfectly controlled**.

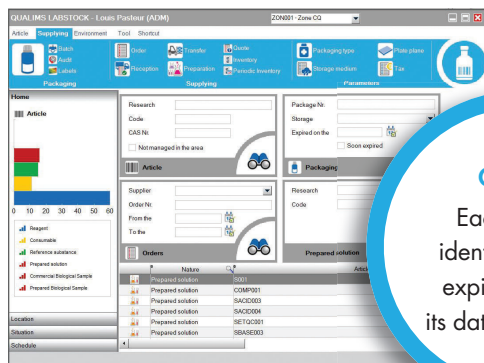


QUALIMS

Qualims SARL - 26 Avenue Léon Jouhaux - 39100 Dole
Tél : +33 (0)1.75.43.86.63 - Fax : +33 (0)1.75.43.48.52 - www.qualims.eu
Société au capital de 250 000 euros - SIREN 450 906 193 RCS Lons le Saunier



CONTROL OF LABORATORY STOCKS



The home page provides quick access to the main features.

QUALITY

Each bottle is identified with its expiry date and its date of opening.

HSE

Pictograms, PPE and MSDS are linked to each article sheet. Storage incompatibilities are thus easily managed.

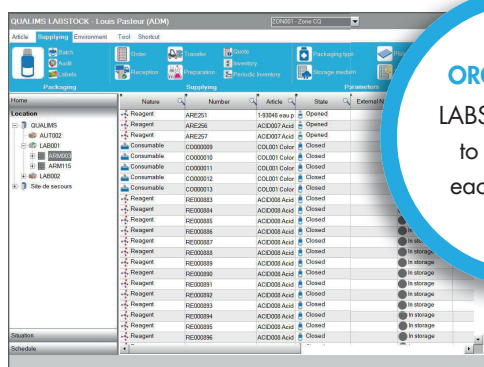


ORGANIZATION

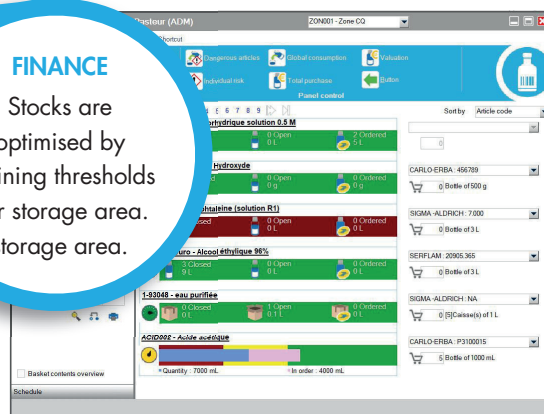
LABSTOCK adapts to the needs of each laboratory.

FINANCE

Stocks are optimised by defining thresholds per storage area.

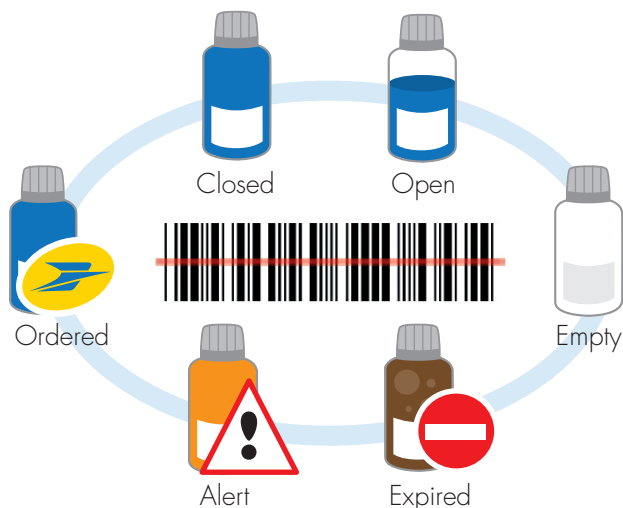


The location window allows you to view the packages by laboratory, by storage and sub-storage.



The status window allows you to check the stock status and anticipate replenishments.

PACKAGING MANAGEMENT



RE0000128

Item: SOLV00003 - Methanol

Lot: L0000015-2

DLV: 03/26/21

Open on: .../.../...

DLU: .../.../...

Visa: _____



Management of packaging using barcodes and real-time status and quantity updates and quantities in real time.

